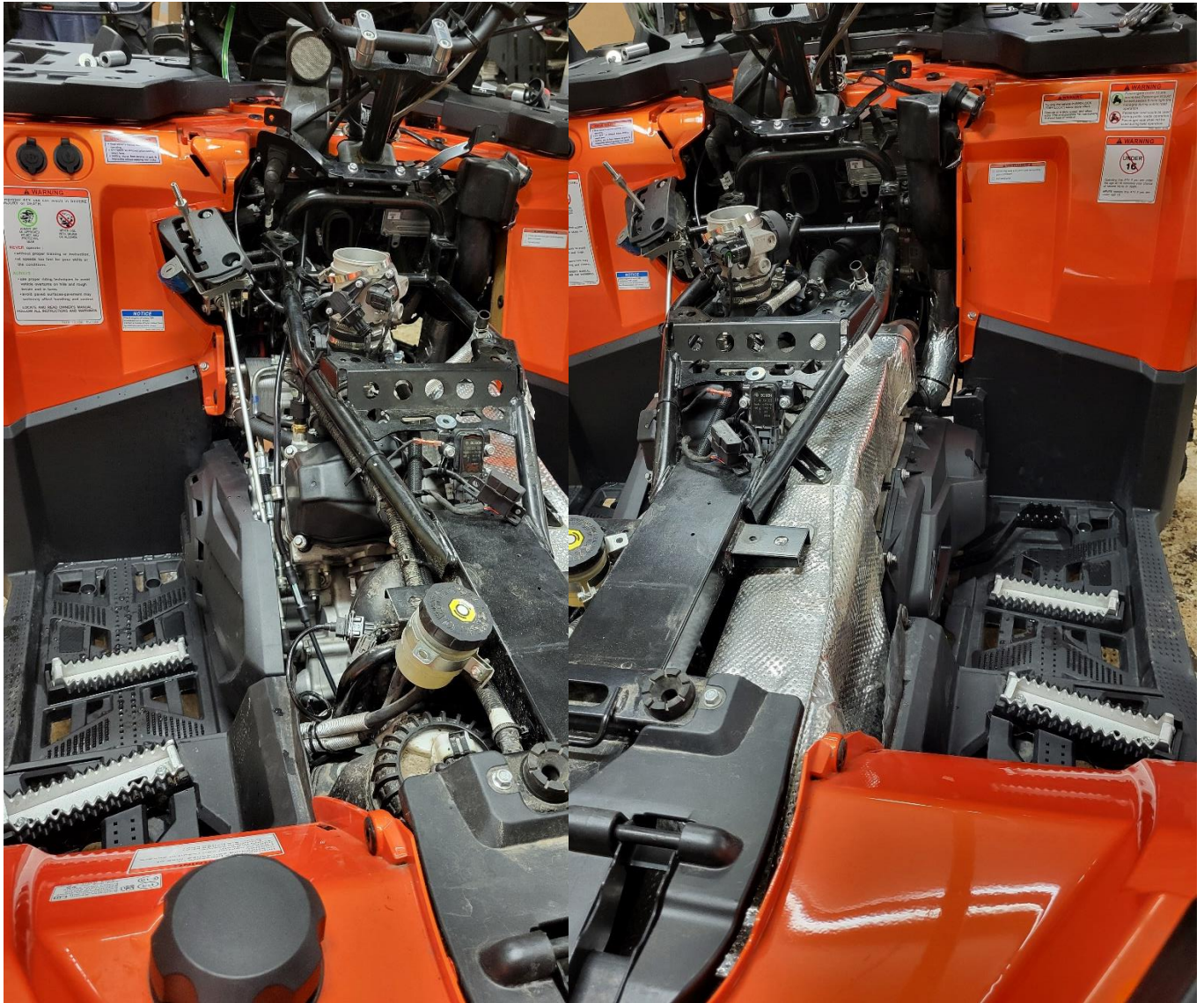


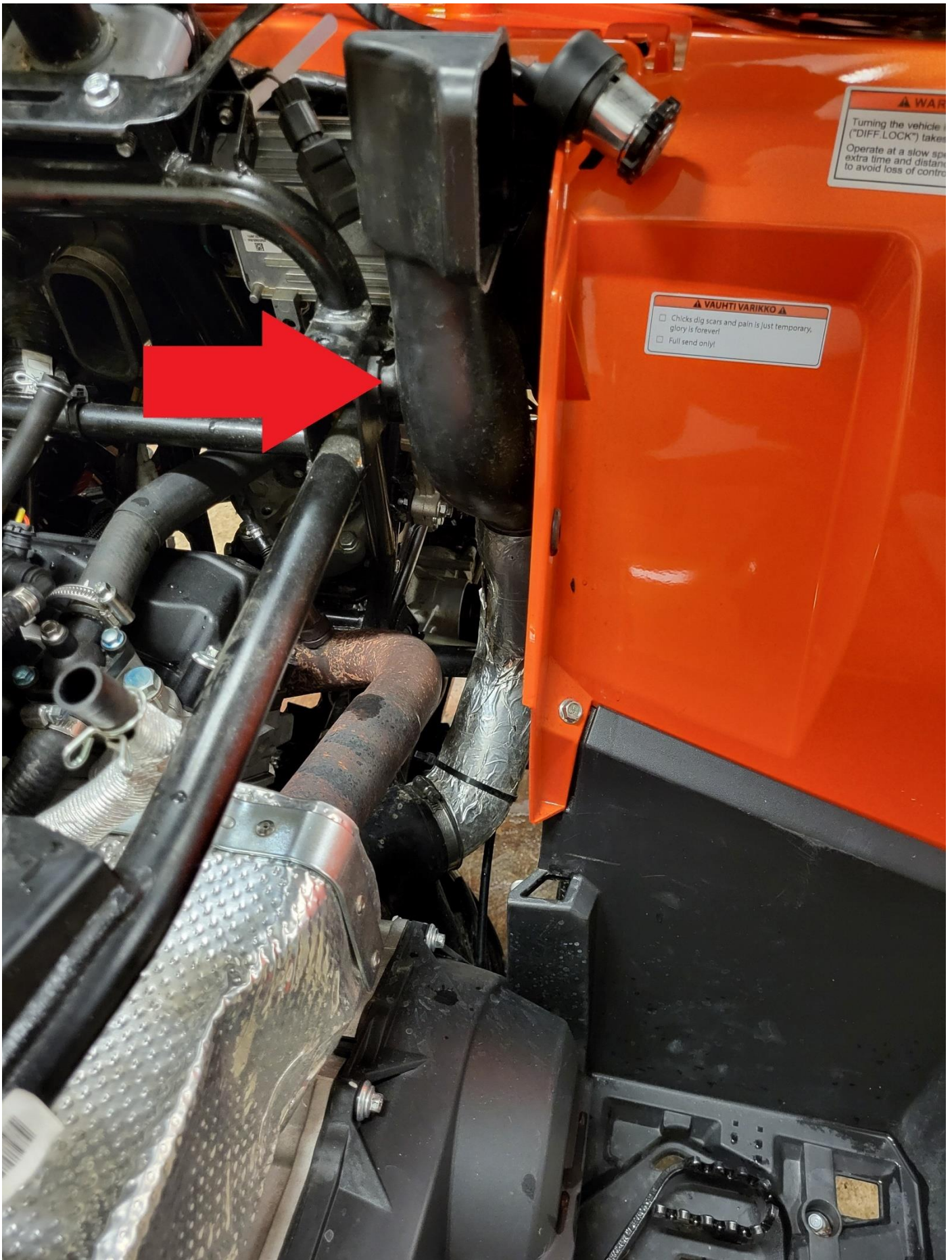
CFMoto CForce 800-1000 MUD Snorkel installation



Remove side-, top plastics and airbox.



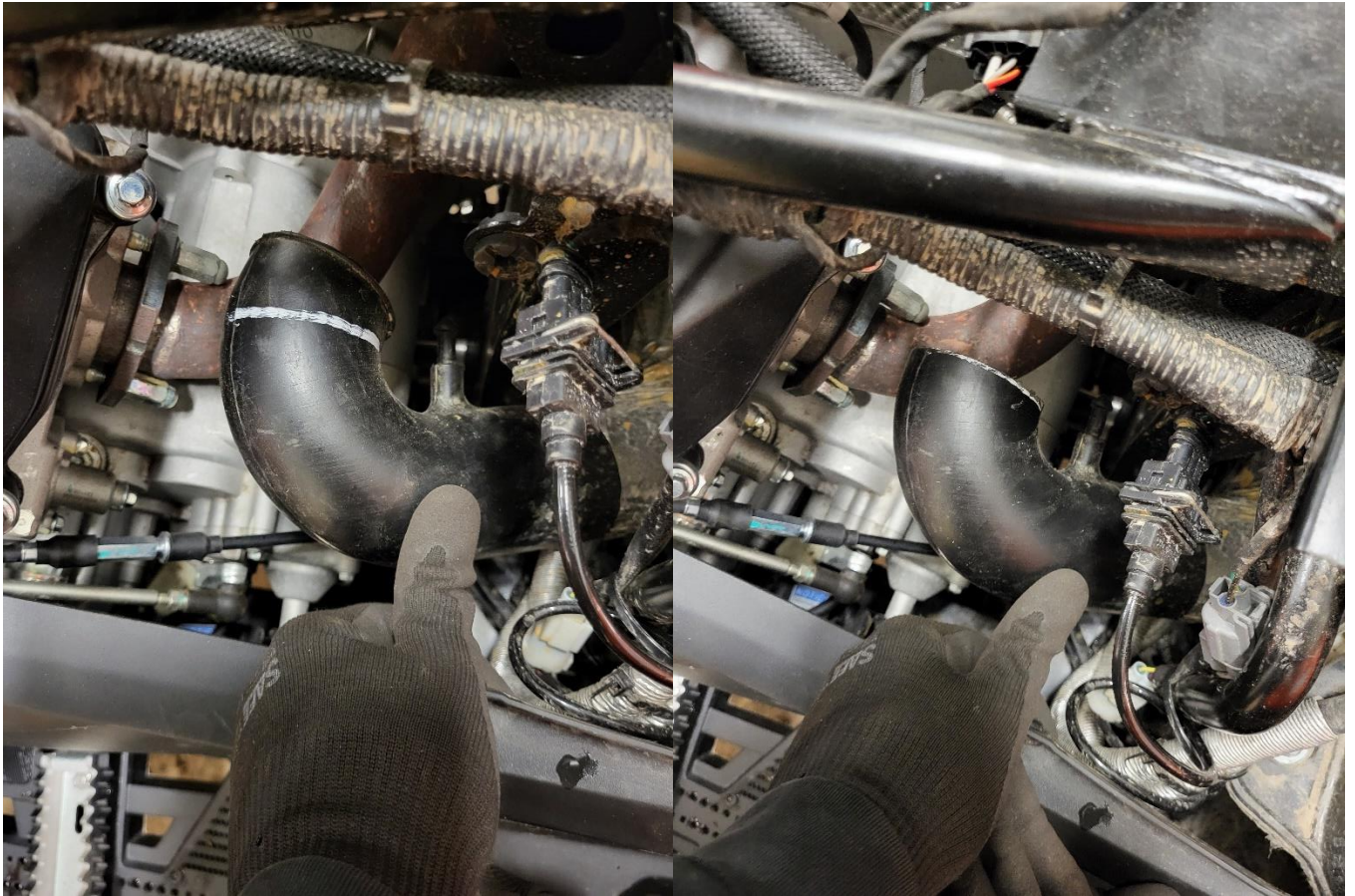
Remove engine intake pipe.



Remove CVT intake pipe.



Cut CVT intake pipe as shown and reinstall the lower joint.

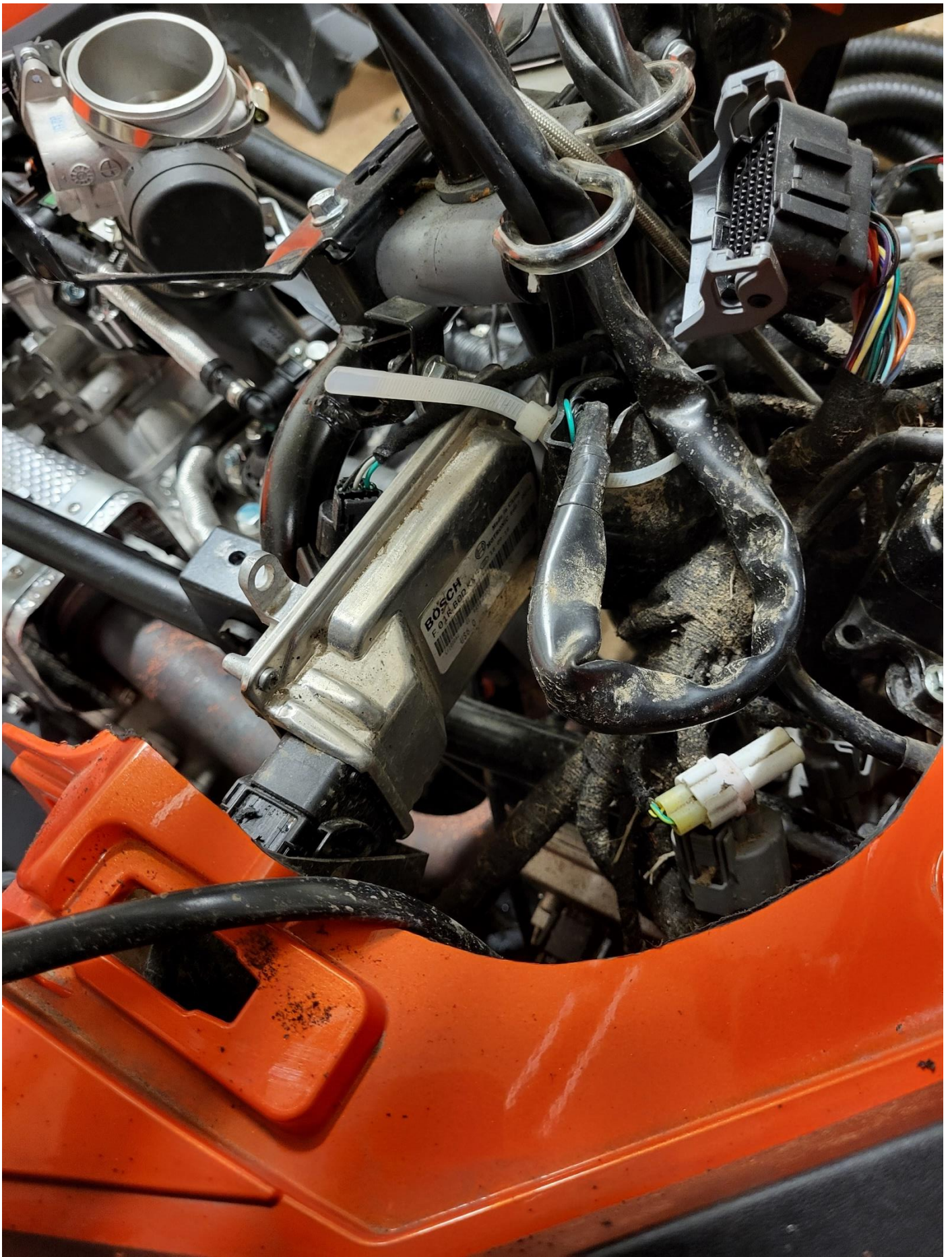


Cut the CVT outlet pipe at the point marked with white.

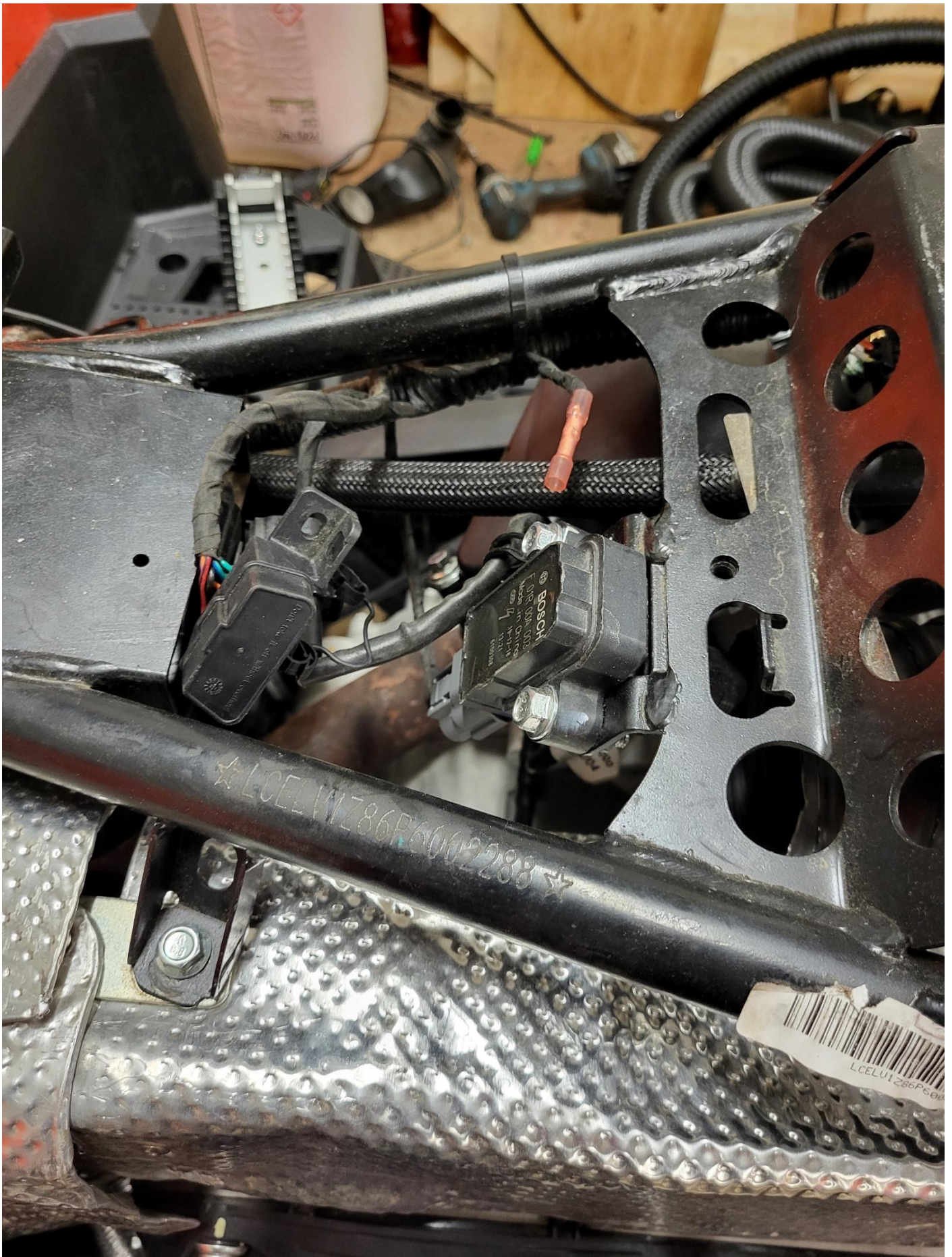


Draw boundaries on the area to be cut, no need to be exactly as shown in the photo. Cut along the lines.

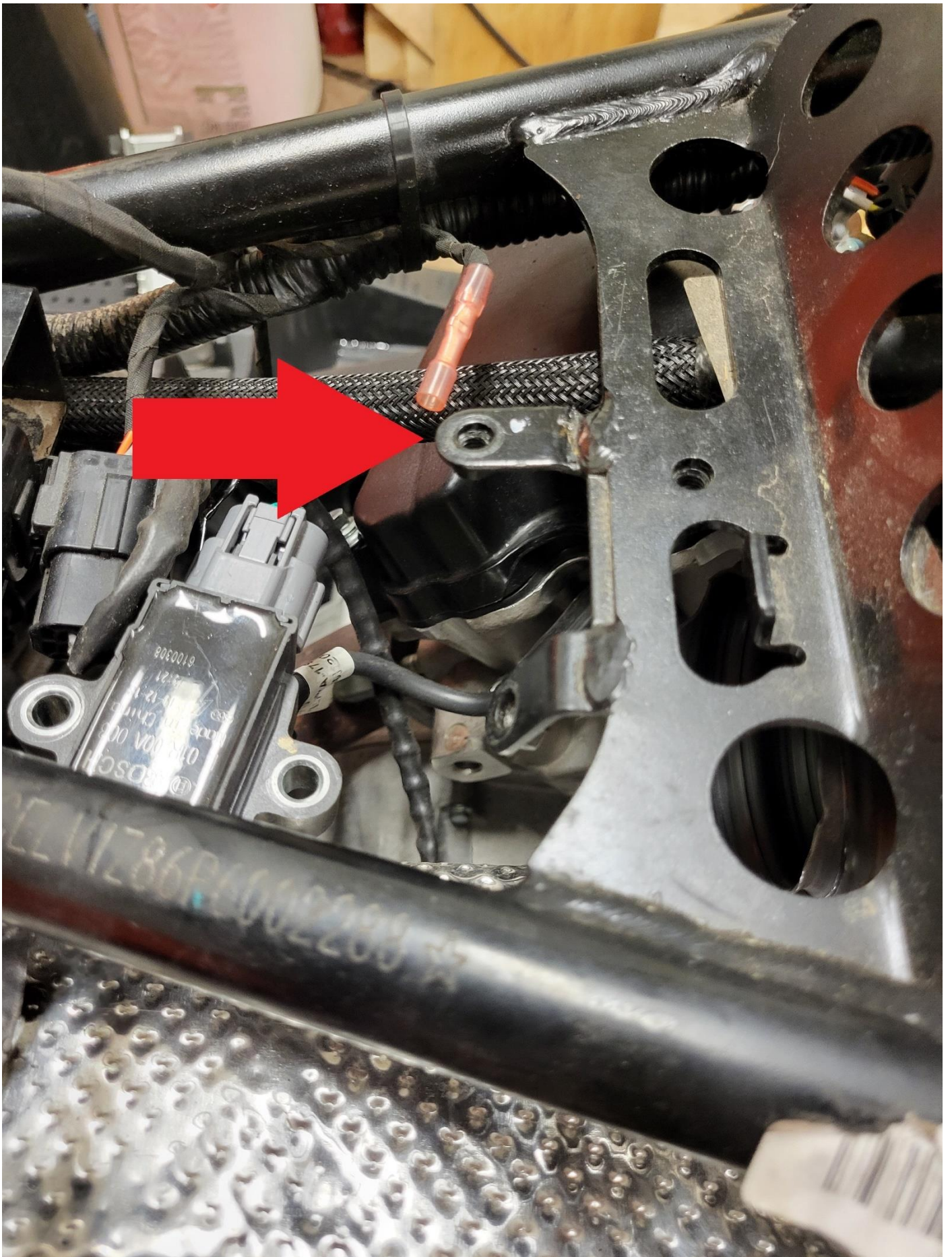
NOTE! Watch out for wires!



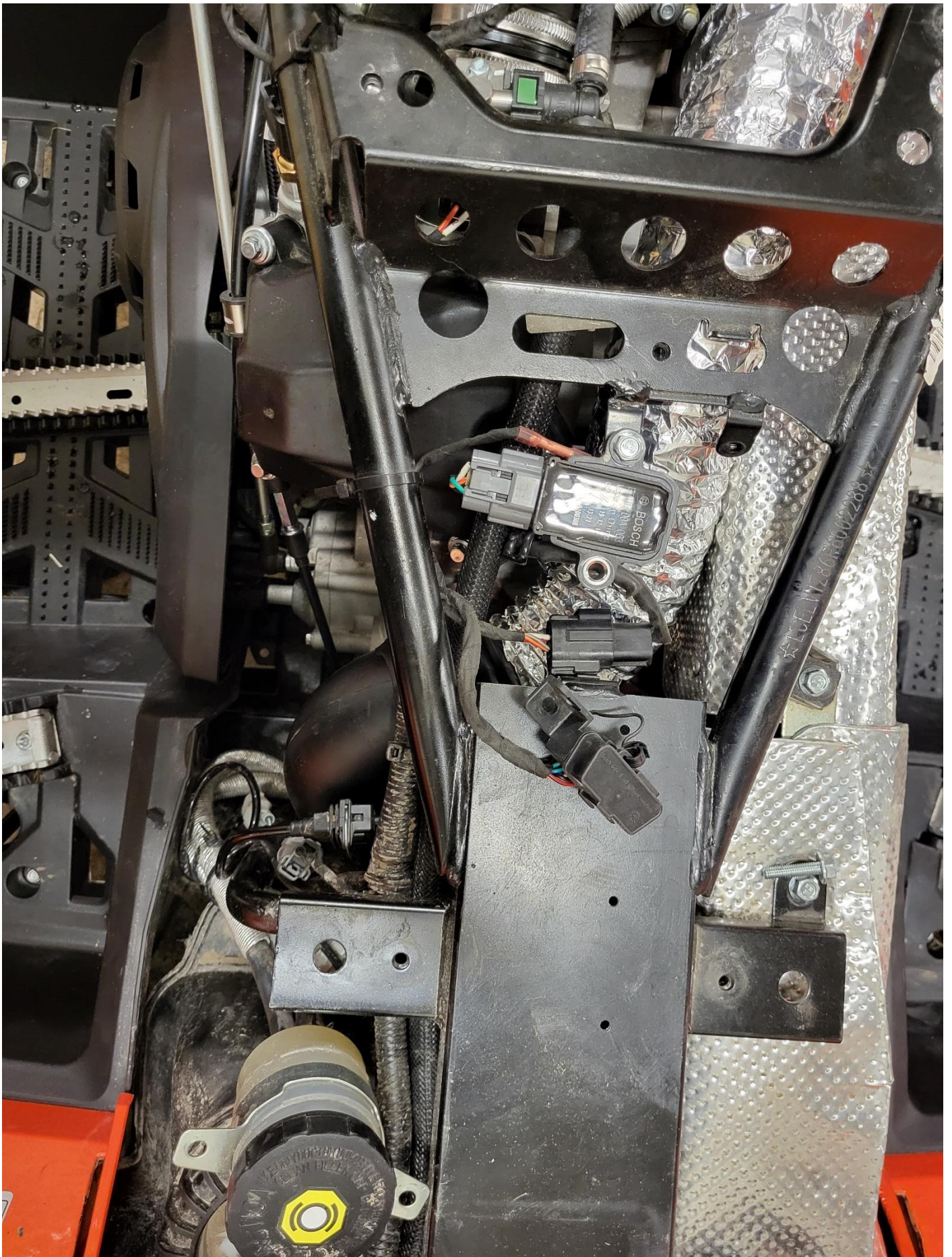
Open ECU bolts.



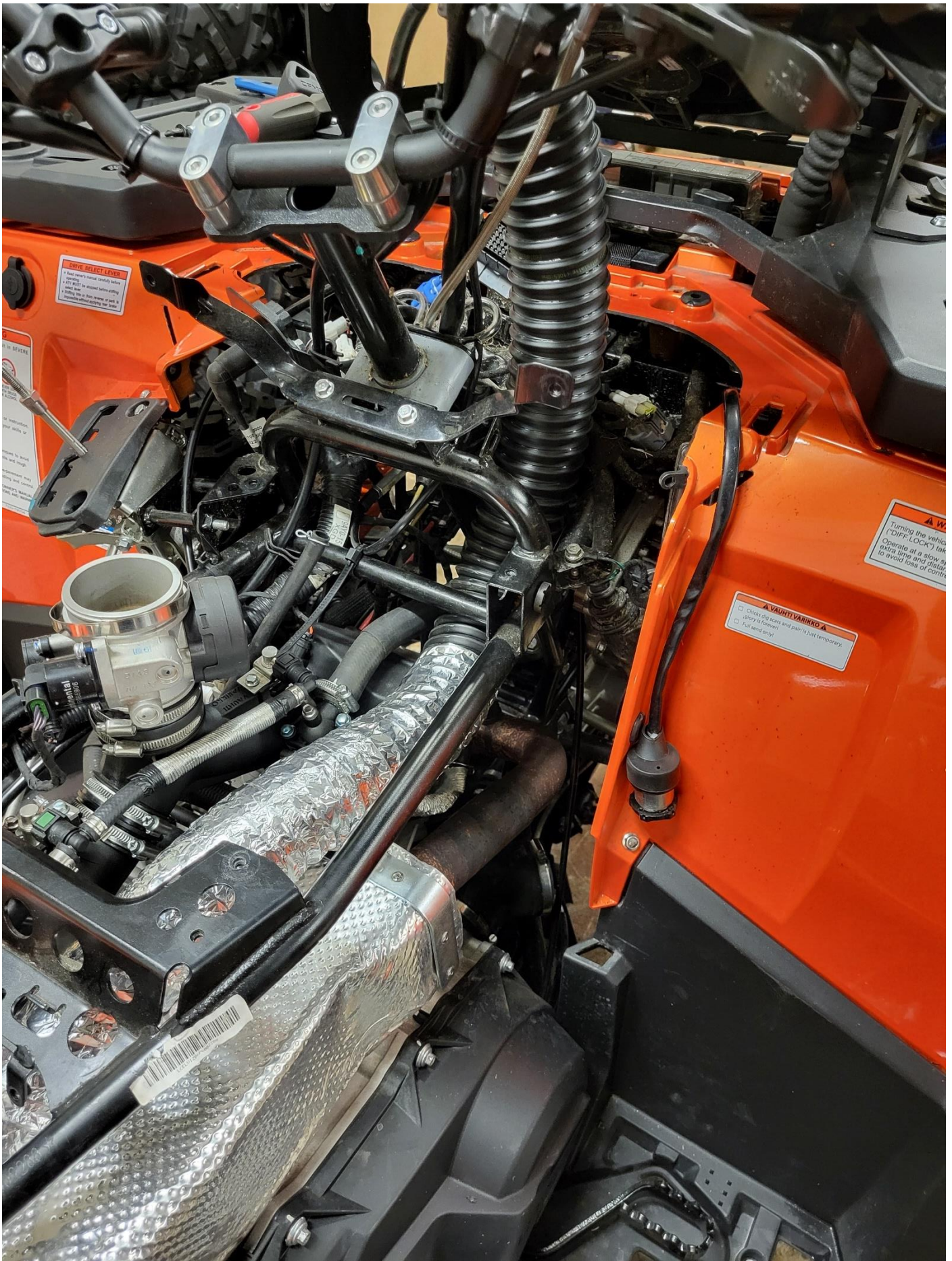
Remove ignition coil.



Turn the inner bracket as shown in picture.



Install ignition coil as shown in picture.



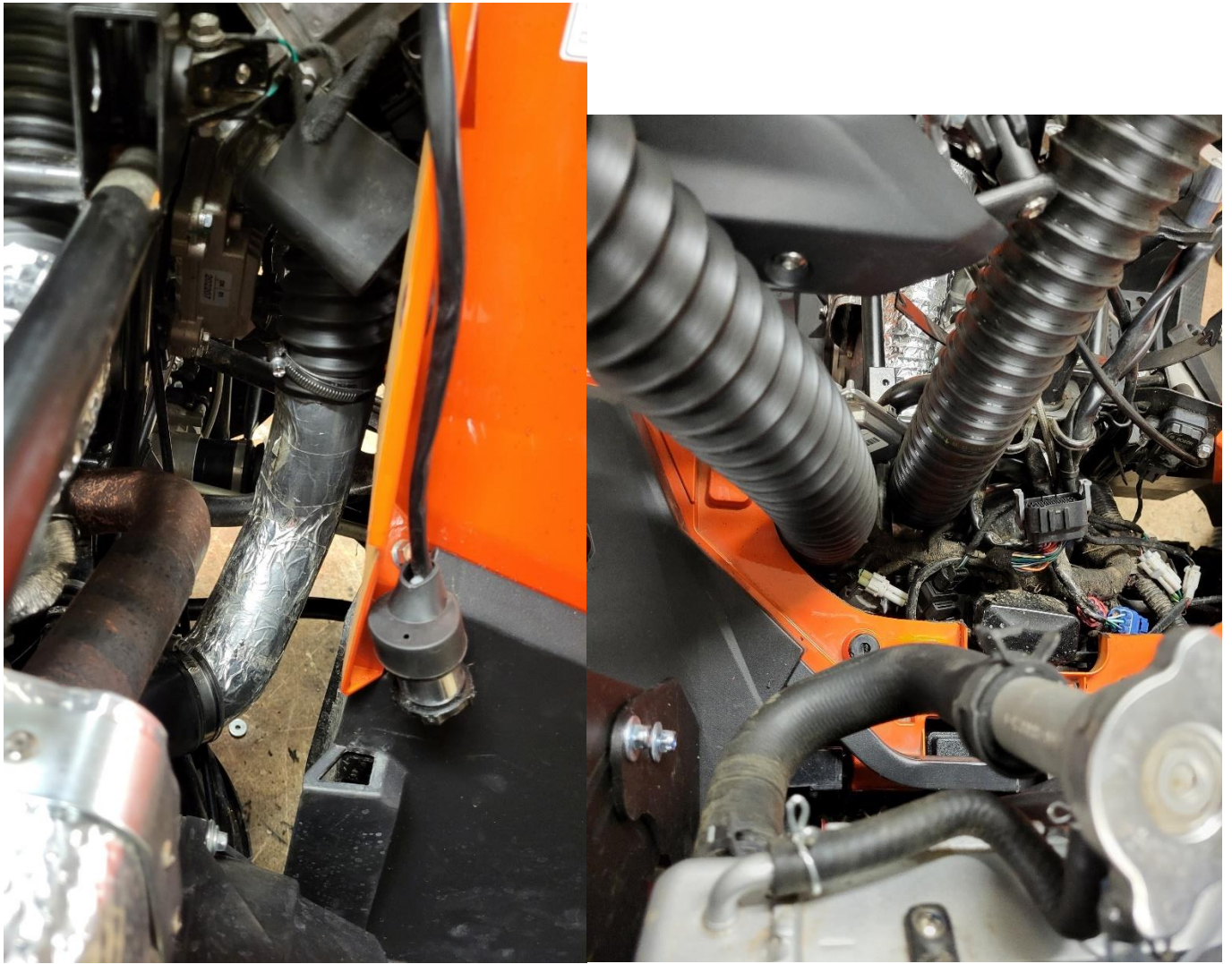
Install CVT outlet hose (130cm)
Remember use aluminum tape on the hose.



Connect hose to the CVT outlet pipe.



Install ECU as shown in picture.



Install hose to the CVT intake pipe (80cm).



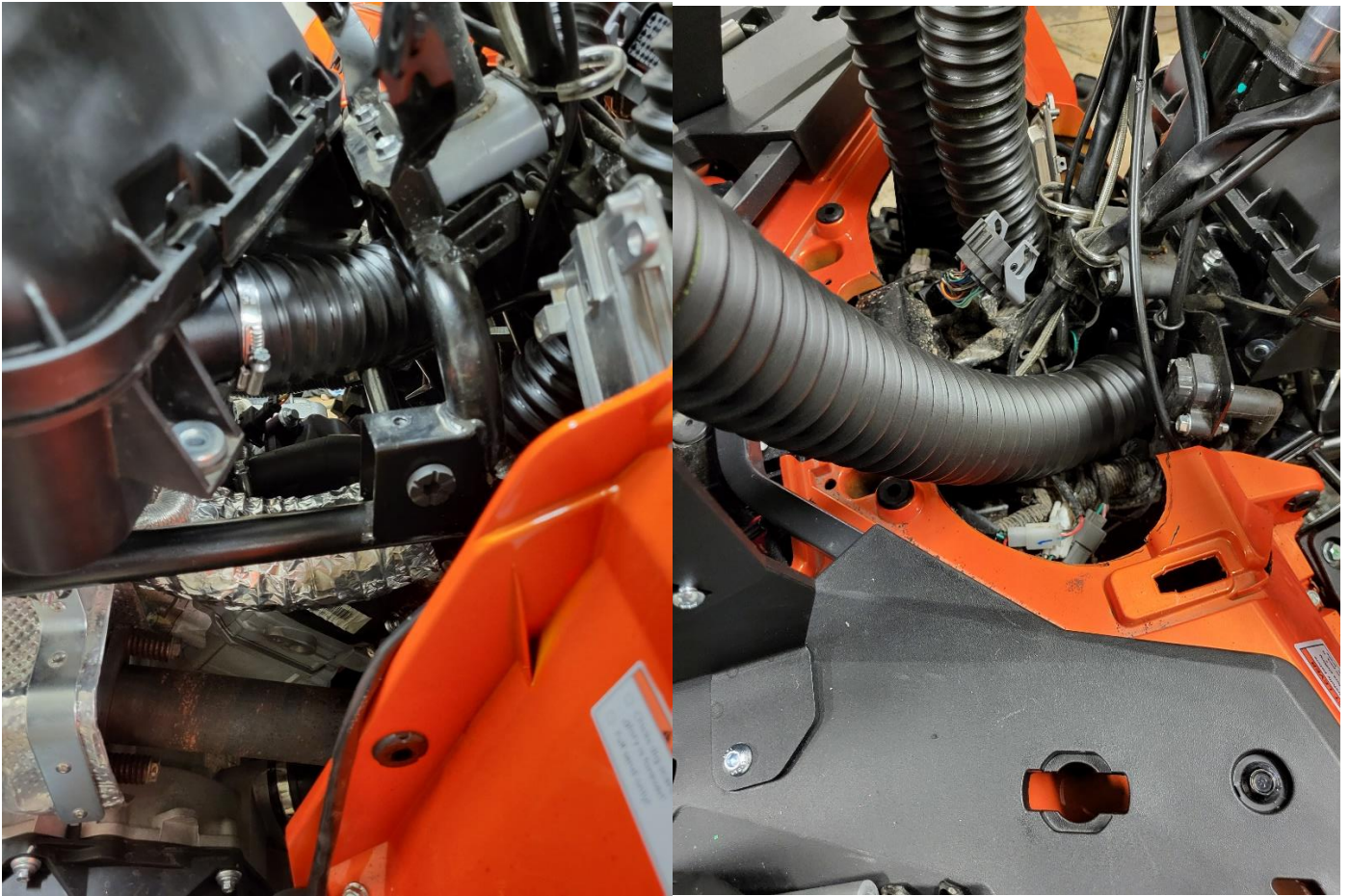
Mark the areas to be cut on the airbox.



Cut and drill.



Use gasket silicone and install connector to the airbox.



Install airbox back to the atv and hose to the connector (80cm).



Vent hose for the front- and rear differential, engine and gearbox.



Mark hole place to the cover and make it.



Install snorkel cover and add hoses to the cover.



Reinstall rest plastics and ENJOY YOUR RIDE!